

Aboriginal and Torres Strait Islander *Student Guide*



THE UNIVERSITY OF
SYDNEY

Applying for 2027 entry



Your history, *your future*

The University of Sydney was founded in 1850 on the land of the Gadigal people.

Today, our campuses and facilities stretch across the ancestral lands of many of Australia's First Peoples.

Aboriginal and Torres Strait Islander staff include senior leaders across the community who are helping to shape the University's future.

University graduates have distinguished themselves in all sectors of Australian society and throughout the world, and include many prominent Aboriginal and Torres Strait Islander leaders and achievers.

Discover our range of programs dedicated to supporting Aboriginal and Torres Strait Islander people who dream of studying here, and start your journey to the University of Sydney.



“The impact these scholarships have had on my life is unfathomable. Waking up each morning to a meaningful, fulfilling vocation is a dream of mine. That’s all you can hope for; to leave a mark, contribute, and inspire change.”

Boston Seinor
Yadhaigana man
Recent graduate
Gadigal Entry Program

Below, left: Dale Harding Bidjara, Garingal and Ghungalu man
Spine 3 (radiance), 2018



“The Gadigal community has been such a big part of my university life. They’ve made me feel seen and supported, especially being away from home.”

Ava Barham
Kamilaroi woman
Bachelor of Veterinary Biology and
Doctor of Veterinary Medicine student



Preparing for *university*

We offer a range of on-campus programs so you can experience university, meet current students, receive exam support and prepare for life after school.

The University of Sydney holds dedicated events for all Aboriginal and Torres Strait Islander high school students. These are designed to support and nurture the academic, cultural and social journey of students and provide a comprehensive experience of what pathways and support services are available.

On-campus day programs

Our immersive on-campus experience days provide students with the opportunity to explore our campus and facilities, participate in hands-on workshops, and speak with current Indigenous students about uni life.

Residential programs

Our residential programs give senior high school students the opportunity to join us for an immersive week of cultural and discipline-based workshops, offering a taste of uni life – with all expenses paid by the University.

Information evenings

Information evenings are an opportunity for you to bring your family, have a yarn, and connect with our community. Explore your study options and get all the advice you need to take your next steps towards uni.

Webinars

Throughout the year, we hold webinars that offer information on topics such as scholarships, entry schemes and student support services.

Learn more about our events and get in touch with our team:

– [sydney.edu.au/
indigenous-programs](https://sydney.edu.au/indigenous-programs)



*Discover our
programs*



Entry to *university*

When you're ready to apply for university, we look at more than your ATAR by focusing on your interests, motivation and goals.

Gadigal Entry Program

Through our Gadigal Entry Program admission pathway, specifically designed for Aboriginal and Torres Strait Islander students, you will:

- be able to apply for an early conditional offer (where you receive an offer to study at the University before you sit your Year 12 exams)
- be awarded adjustment factors to boost your selection rank
- have access to an academic skills program before you start uni
- receive ongoing academic and personal support throughout your degree.

For further information on pathways, visit:

- sydney.edu.au/indigenous-pathways

Extended Bachelor's Programs

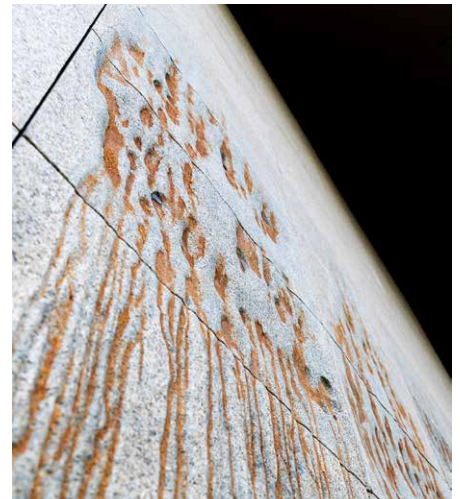
Our extended bachelor degrees offer a dedicated pathway for Aboriginal and Torres Strait Islander students. These extended degrees include an additional foundation year with culturally relevant literacy and mathematics studies. These studies will equip you with excellent communication, critical and analytical skills that will prepare you for university studies and beyond. This pathway is open to eligible students who can demonstrate potential for tertiary study to a standard sufficient to undertake the course, as defined in the course admission criteria.

The extended degrees:

- Bachelor of Arts (Extended)
- Bachelor of Liberal Arts and Science (Extended)
- Bachelor of Science (Extended)
- Bachelor of Science (Extended) (Health)

Our dedicated staff are available to assist you throughout the admission process:
indigenous.recruitment@sydney.edu.au

Below, right: Robert Andrew Yawuru man
Garabara, 2018



Support at *university*

You'll receive continuous support throughout your degree so you can achieve your potential and graduate job-ready.

The Gadigal Centre

Our dedicated student centre that supports Aboriginal and Torres Strait Islander students.

We are deeply committed to supporting our students with their academic, cultural, economic, social and emotional needs.

We want to empower you throughout your studies and beyond. Think of us as your family at the University – we will work with you to make sure that your journey here is as fun and successful as possible.

Through the Gadigal Centre you'll have access to:

- the Mentoring Our Brothers and Sisters (MOBS) Program delivered by senior Indigenous students
- free tutoring and group sessions through our Indigenous Tutorial Assistance Scheme (ITAS)
- culturally safe spaces for Aboriginal and Torres Strait Islander students.

You'll also have access to the broader range of student support services such as careers support, disability services, financial support, academic support and enrichment programs.

- sydney.edu.au/gadigal-centre

Accommodation

Living on campus is a great way to meet people, build friendships and develop networks that will stay with you for life. Accommodation options include:

- University residences (furnished rooms, self-catered)
- Residential colleges (furnished rooms, all meals)
- Off-campus accommodation



Scholarships

Aboriginal and Torres Strait Islander Entry Award

A \$10,000 scholarship to support Indigenous students with an ATAR (or equivalent) of 85+ to study at the University of Sydney.

- sydney.edu.au/indigenous-entry-award

Gadigal Accommodation Scholarship

This scholarship reduces your weekly rent to \$50 and will give you a guaranteed spot in one of our residential colleges or University residences. The number of scholarships available varies each year.

- sydney.edu.au/gadigal-accommodation-scholarship

Search hundreds of offerings, including dedicated scholarships for Aboriginal and Torres Strait Islander students.

- sydney.edu.au/scholarships-search

For further support, the Australian Government provides an ABSTUDY Living Allowance.

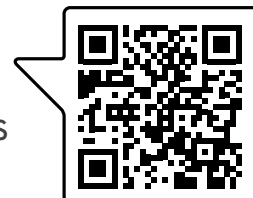
- servicesaustralia.gov.au

University is a time for growth and change – we provide a culturally supportive environment as you transition to a University of Sydney student.

Gadigal *ATARs*

Below are the indicative selection ranks required for admission to our courses, along with the indicative reduced requirements for applicants eligible under the Gadigal Entry Program. All scores published are a guide. For the most up-to-date information, visit:

sydney.edu.au/gadigal



Course	Selection rank	Gadigal ATAR
Architecture, design and planning		
B Architecture and Environments	85	80
B Design (Interaction Design)	80	75
B Design in Architecture	95	86
B Design in Architecture (Honours) and M Architecture	97	87
Arts and social sciences		
B Arts	80	60
B International Studies	90	75
B Languages	90	80
B Media and Communications	95	80
B Politics, Philosophy, and Economics	92	74
B Visual Arts [▲]	70	60
Business		
B Commerce	96	85
B Commerce and B Arts	96	85
B Commerce and B Science	96	85
Economics		
B Economics	91	80
B Economics and B Arts	91	80

Course	Selection rank	Gadigal ATAR
Education and social work		
B Education (Early Childhood) [°]	77	65
B Education (Health and Physical Education) ^{^°}	80	70
B Education (Primary) ^{^°}	85	70
B Education (Secondary) [°]	80	60
B Social Work [°]	80	60
B Arts and B Social Work [°]	80	60
Engineering and computer science		
B Advanced Computing [‡]	90	80
B Advanced Computing and B Commerce [‡]	96	85
B Advanced Computing and B Science [‡]	90	80
B Advanced Computing and B Science (Health) [‡]	90	80
B Advanced Computing and B Science (Medical Science) [‡]	90	80
B Engineering Honours (Aeronautical Engineering) [‡]	90	80
B Engineering Honours (Biomedical Engineering) [‡]	90	80
B Engineering Honours (Chemical and Biomolecular Engineering) [‡]	90	80
B Engineering Honours (Civil Engineering) [‡]	90	80
B Engineering Honours (Dalyell Scholars) [‡]	98	90
B Engineering Honours (Electrical Engineering) [‡]	90	80
B Engineering Honours (Environmental Engineering) [‡]	90	80
B Engineering Honours (Flexible First Year) [‡]	90	80

Course	Selection rank	Gadigal ATAR
B Engineering Honours (Mechanical Engineering) [‡]	90	80
B Engineering Honours (Mechatronic Engineering) [‡]	90	80
B Engineering Honours (Software Engineering) [#]	90	80
B Engineering Honours with Space [‡]	99	89
B Engineering Honours and B Arts [‡]	90	80
B Engineering Honours and B Commerce [‡]	96	85
B Engineering Honours (Civil Engineering) and B Design in Architecture [‡]	95	86
B Engineering Honours and B Project Management [‡]	90	80
B Engineering Honours and B Science [‡]	90	80
B Engineering Honours (Biomedical Engineering) and B Science (Health) [‡]	90	80
B Engineering Honours and B Science (Medical Science) [‡]	90	80
B Project Management	86	80
Law		
B Arts and B Laws	99.5	85
B Commerce and B Laws	99.5	85
B Economics and B Laws	99.5	85
B Engineering Honours and B Laws [‡]	99.5	85
B Science and B Laws	99.5	85
Medicine and health		
B Applied Science (Diagnostic Radiography) [◊]	96	60
B Applied Science (Exercise and Sport Science) [◊]	82	60
B Applied Science (Exercise Physiology) [◊]	91	60
B Applied Science (Occupational Therapy) [◊]	93	60
B Applied Science (Physiotherapy) [◊]	99.5	60
B Applied Science (Speech Pathology) [◊]	94	60
B Arts and D Medicine ^{▲◊}	99.95	90
B Arts and M Nursing [◊]	80	65
B Biomedicine and Health [*]	94	70
B Nursing (Advanced Studies) [◊]	84	65

B = Bachelor of, M = Master of, D = Doctor of

▲ Admission is based on a combination of selection rank, or equivalent, plus additional admission criteria

Course	Selection rank	Gadigal ATAR
B Oral Health [◊]	95	60
B Pharmacy (Honours) and M Pharmacy Practice ^{†◊}	90	70
B Pharmacy and Management (Honours) and M Pharmacy Practice ^{†◊}	90	70
B Science and D Medicine ^{▲◊}	99.95	90
B Science and M Nursing [◊]	80	65
B Science (Health) and M Nursing [◊]	80	60
B Science and M Nutrition and Dietetics [◊]	97.5	85
Music		
B Music [▲]	70	60
B Music (Composition) [▲]	70	60
B Music (Music Education) [▲]	70	60
B Music (Performance) [▲]	70	60
Science		
B Agricultural Science [◊]	75	65
B Agricultural Science Honours [◊]	75	65
B Animal and Veterinary Bioscience [◊]	80	70
B Liberal Arts and Science [◊]	70	60
B Liberal Arts and Science (Advanced)	95	85
B Mathematical Sciences [‡]	95	85
B Psychology	85	70
B Psychology Honours	97	85
B Science	80	65
B Science (Advanced)	95	85
B Science (Health)	80	60
B Science (Medical Science)	90	80
B Science and B Arts	80	70
B Veterinary Biology and D Veterinary Medicine ^{▲◊}	98	85
B Wildlife Conservation (Taronga) [◊]	80	70

The following courses are not available for entry through this scheme:

B Arts (Dual Degree: Sciences Po, France)

B Economics (Dual Degree: Sciences Po, France)

◊ Inherent course requirements apply sydney.edu.au/students/inherent-requirements

▲ NESAs prerequisites apply sydney.edu.au/courses

‡ Mathematics course prerequisite applies sydney.edu.au/study/maths



We recognise and pay respect to the Elders and communities – past, present, and emerging – of the lands that the University of Sydney’s campuses stand on. For thousands of years they have shared and exchanged knowledges across innumerable generations for the benefit of all.

Application support

indigenous.recruitment@sydney.edu.au

sydney.edu.au/indigenous-support

Stay connected

Visit our website, chat to staff and follow us on social media.



@Sydney_Uni

Produced by Marketing and Communications, the University of Sydney, April 2026. The University reserves the right to make alterations to any information contained within this publication without notice. 26/5107.1

CRICOS 00026A TEQSA PRV12057